

MARWOOD BUILDING PROGRAM HIGHLIGHTS

Marwood Nursing & Rehab began in 1963 as a 50-bed nursing facility providing convalescent care to seniors. Over the last 45 years, caring for over 8,000 seniors, Marwood has grown to 240 bed not-for-profit skilled nursing facility with an extended service line which includes rehabilitation services, specialized Alzheimer's/Dementia care and skilled nursing care.

Marwood Nursing & Rehab is introducing a new way of caring for our seniors. To do that, we need to update our facility. Architectural planning began in 2005. We plan to break ground and start building by 2010. The transformation will include two new additions. With the new additions, we will be able to convert our 50-bed wings into individual neighborhoods consisting of 16 beds each. Each neighborhood will be equipped with its own private entrance, dining service, and social area.

This modernization of Marwood will better serve our aging population and offer services that are needed in our community. The overall plan will include three phases and will take approximately three years to complete.



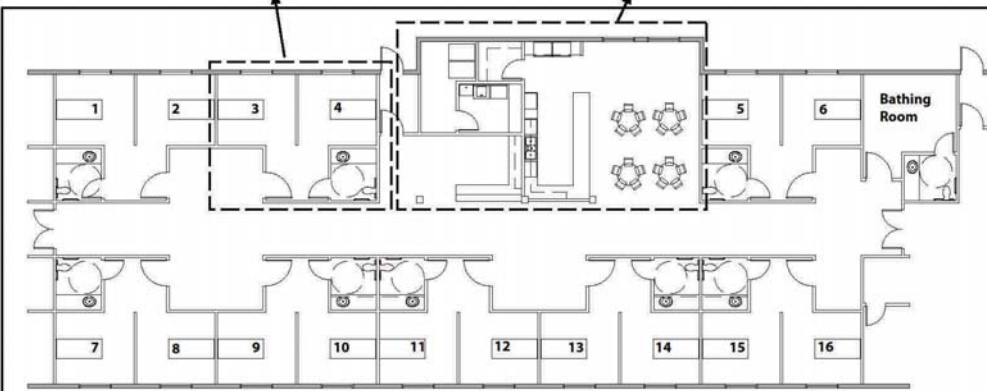
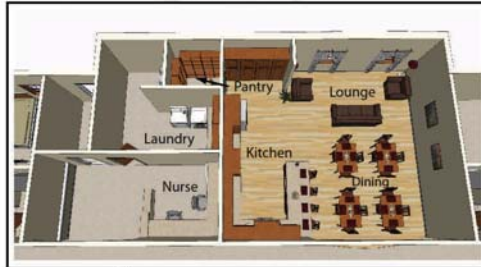
Marwood Nursing and Rehabilitation - New Neighborhood

Neighborhood Amenities	
Typical Semi-Private Room 1 ADA Compliant Bathroom Serving Two Residents Wheelchair Storage Approximately 150 Sq. Ft. Per Resident	Typical Community Area Dedicated Dining Room for 16 Residents Lounge with Views to Landscaped Areas Dedicated Residential Style Kitchen with Pantry Dedicated Nurse's Station with Pantry Dedicated Bathing Room Entrance from Exterior

Typical Semi-Private Room



Typical Community Area



Dining Room Perspective View



Kitchen Perspective View



Corridor Perspective View